



Quest Meat

R&D license-free high quality cell lines to catalyze research and development of cultivated meat.



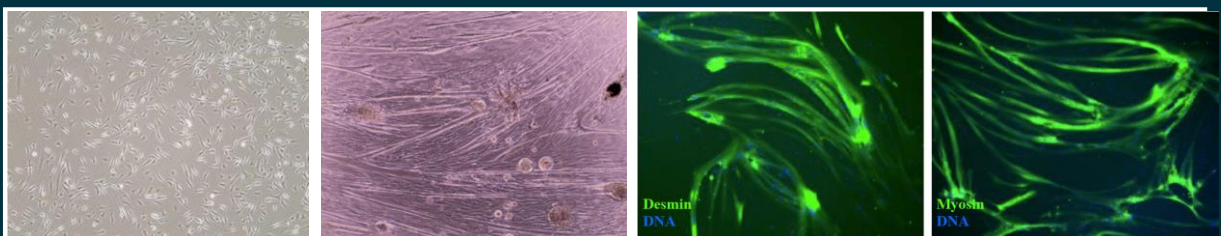
Product Features

- ✓ Multiple species (bovine, porcine, water buffalo)
- ✓ Multiple bovine breeds
- ✓ Sterile and mycoplasma-free
- ✓ Cell expansion validated in 2D and stirred bioreactors
- ✓ Extensive protocols and quality assessment provided with purchase
- ✓ Customer support



Quest cell lines have been generated by our in-house experts who bring vast experience in stem cell isolation and production, cell culture technology, industrial scale up of anchorage-dependent mammalian cells, and bioprocess design and optimization.

Paying great attention to the fact that the quality of a product is heavily dependent on the raw materials that go into a process (or, as the saying goes, 'junk in, junk out!'), we have generated extensive data on **cell quality** for our products, ensuring customers receive the best **quality** start material for their processes and testing.



QM-D4BB0822M-1 product data showing cell morphology before and after myogenic induction (left, left middle), as well as expression of myogenic markers desmin and myosin post-induction (right middle, right)

To find out more information and to request a quote, please contact us:

w: questmeat.com

e: info@questmeat.com

Quest Meat Ltd. Birmingham Research Park, Vincent Drive, Birmingham B15 2SQ, United Kingdom



Quest Meat

Product Information

| | |
|----------------------|--------------------------|
| Intended Use | R&D |
| Donor Information | Species, Breed, Sex, Age |
| Tissue Sources | Muscle, Fat, Bone Marrow |
| Sterility | ● |
| Mycoplasma-free | ● |
| Viability | ● |
| Identity Markers | ● |
| Cell Expansion Data | ● |
| Differentiation Data | ● |

Product Benefits

- ✓ Access to cells for research and development without licensing restrictions
- ✓ Extensive characterization to increase confidence in critical raw materials
- ✓ Accelerated and de-risked process development



| Product | Species | Breed | Cell type | Unit Size / passage number | Intended use |
|----------------|-----------------------|----------------------|----------------------------|----------------------------|--------------|
| QM-D4BB0822M-1 | Bos taurus | British Blue | Myosatellite | 1 million cells, p1 | R&D only |
| QM4B0822-1 | Bos taurus | British Blue | Adipose-derived stem cells | 1 million cells, p1 | R&D only |
| QM-D3AA0822M-1 | Bos taurus | Aberdeen Angus cross | Myosatellites | 1 million cells, p1 | R&D only |
| QM-D5LMO723M-1 | Bos taurus | Limousine | Myosatellites | 1 million cells, p1 | R&D only |
| QM-D6AA0723-1 | Bos taurus | Aberdeen Angus pure | Myosatellites | 1 million cells, p1 | R&D only |
| QM-D1PO823M-1 | Sus scrofa domesticus | N/A | Myosatellites | 1 million cells, p1 | R&D only |
| QM1PA0823-1 | Sus scrofa domesticus | N/A | Adipose-derived stem cells | 1 million cells, p1 | R&D only |
| QM-D1WBO923-1 | Bubalus bubalis | N/A | Myosatellites | 1 million cells, p1 | R&D only |
| QM1WBA0923-1 | Bubalus bubalis | N/A | Adipose-derived stem cells | 1 million cells, p1 | R&D only |

Quest Meat are a UK-based company creating cell lines and low-cost, circular economy cell culture ingredients to make cultivated meat faster and cheaper.

To find out more information and to request a quote, please contact us:

w: questmeat.com

e: info@questmeat.com

Quest Meat Ltd. Birmingham Research Park, Vincent Drive, Birmingham B15 2SQ, United Kingdom